

# **ASPIREPATH AI**

**G .SUDHAKAR RAJU, MARELLA SIRI BHAVISHYA REDDY, SNEHA REDDY  
AELIJERLA , SRILAXMI LINGA**

**1** Associate Professor, Department of Information Technology, Bhoj Reddy Engineering College for Women

**2.3.4** B,tech students, Department of *Information Technology*, *Bhoj Reddy Engineering College for Women*

[snehareddyaelijerla@gmail.com](mailto:snehareddyaelijerla@gmail.com)

## **ABSTRACT**

*Career development in modern digital environments has become increasingly fragmented as learners rely on multiple platforms for skill acquisition, resume building, interview preparation, and job exploration. This lack of integration often results in inefficient learning paths and limited career readiness. To address this challenge, this project introduces AspirePath AI, a unified, AI-powered career advancement system designed to provide personalized learning guidance, automated resume generation, smart goal tracking, and interactive mentorship through GPT-4-based assistance. The platform integrates a React and TypeScript frontend with a modular Node.js and Express backend, supported by MongoDB Atlas for scalable data management. External APIs such as OpenAI GPT-4, YouTube Data API, Google Sheets API, and SMTP services are utilized to deliver curated resources, job updates, and AI-driven insights in real time. Security measures, including JWT authentication and role-based access control, ensure safe and authorized usage. Deployed through a GitHub-powered CI/CD pipeline on Vercel, AspirePath AI offers a robust, scalable, and intelligent ecosystem that enhances learning efficiency, practical*

*skill development, and overall career readiness for users within a single integrated platform.*

## **KEYWORDS**

*personalized learning, GPT-4, resume automation, career development, job aggregation, AI-based mentoring, Mock Interview, TechNews, Project Recommendations, Study Buddy AI.*

## **OBJECTIVE**

The main objective of **AspirePath AI** is to develop an intelligent, user-centric platform that leverages Artificial Intelligence to guide individuals in making informed career decisions and achieving their professional goals.

- 1. Personalized Career Guidance**
  - To provide customized career recommendations based on user skills, interests, education, and goals.
  - Helps users identify the most suitable career paths using AI analysis.
- 2. Skill Gap Analysis**
  - To identify the gap between current skills and required industry skills.
  - Suggest relevant courses, certifications, and training programs.
- 3. AI-Based Recommendation System**
  - To implement machine learning algorithms that recommend jobs,

learning paths, and career opportunities tailored to each user.

#### 4. **Career Path Planning**

- To generate a step-by-step roadmap for users to achieve their desired career.
- Includes milestones like education, skills, internships, and job roles.

#### 5. **Real-Time Career Assistance (Chatbot)**

- To provide instant guidance through an AI chatbot for career-related queries.
- Enables interactive and continuous user support.

#### 6. **Job Matching and Opportunities**

- To connect users with relevant job openings based on their profile and preferences.
- Improves employability and job search efficiency.

#### 7. **Progress Tracking System**

- To track user growth, skill development, and career progress over time.
- Provides feedback and improvement suggestions.

#### 8. **User-Friendly Interface**

- To design an intuitive and accessible platform for students, freshers, and professionals.

### **NEED FOR STUDY**

In today's rapidly evolving job market, individuals—especially students and fresh graduates—face significant challenges in choosing the right career path. With the vast number of available options, lack of proper guidance, and constantly changing industry demands, making informed career decisions has become increasingly difficult.

Traditional career counseling methods are often limited, time-consuming, and not personalized to individual needs. Many students rely on incomplete information, peer influence, or outdated resources, which may lead to wrong career choices, unemployment, or dissatisfaction in professional life.

Moreover, there is a growing gap between academic learning and industry requirements. Students may not be aware of the skills needed for specific roles, resulting in skill mismatches and reduced employability. This highlights the need for a smart system that can analyze user data and provide accurate, personalized recommendations.

AspirePath AI addresses these issues by leveraging Artificial Intelligence to offer data-driven career guidance. It helps users understand their strengths, identify skill gaps, and receive tailored career paths along with actionable steps. The system also provides real-time support through intelligent recommendations and chatbot assistance, making career planning more efficient and accessible.

Therefore, the study and development of AspirePath AI are essential to bridge the gap between education and employment, enhance decision-making, and empower individuals to achieve their career goals in a structured and informed manner.

### **EXISTING SYSTEM**

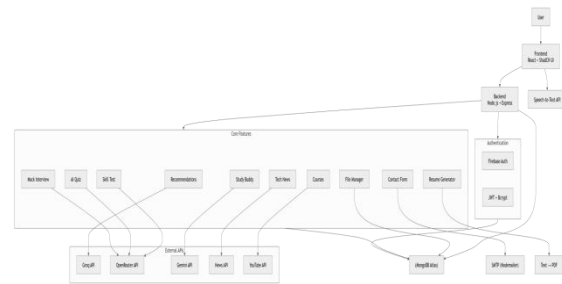
In the existing ecosystem, learners rely on multiple disconnected platforms to build skills, gain knowledge, and explore career opportunities. Traditional e-learning platforms such as Coursera, Udemy, and edX provide strong theoretical content but lack personalized mentorship, career

readiness features, and practical guidance. Career portals like LinkedIn, Naukri, and Glassdoor focus mainly on networking and job listings, offering no integration with a user’s learning progress or skill development needs. Project collaboration tools like GitHub and GitLab allow hosting and version control but do not provide structured learning pathways or AI-driven recommendations. Due to this fragmentation, users face challenges such as manual resume preparation, difficulty in tracking learning goals, an overwhelming amount of unguided resources, and the absence of a centralized platform that connects learning, projects, and career advancement.

**DISADVANTAGES**

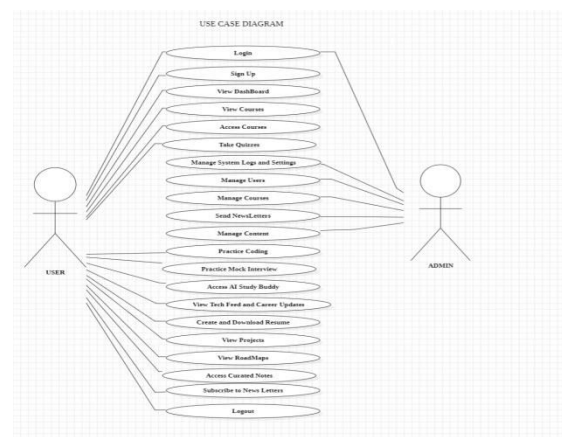
- Many systems rely on traditional machine learning models that are not capable of detecting advanced and modern deepfake techniques accurately.
- Detection accuracy is often limited due to insufficient and less diverse labeled training datasets.
- Several systems do not provide secure user authentication, making access control and user management difficult.
- Most tools lack database integration, so user data, uploaded media, and prediction history are not stored.
- Analyzed images and videos are generally not preserved, preventing users from reviewing past results.
- Many systems do not offer API support, limiting integration with external applications such as websites and mobile platforms.

**SYSTEM ARCHITECTURE**

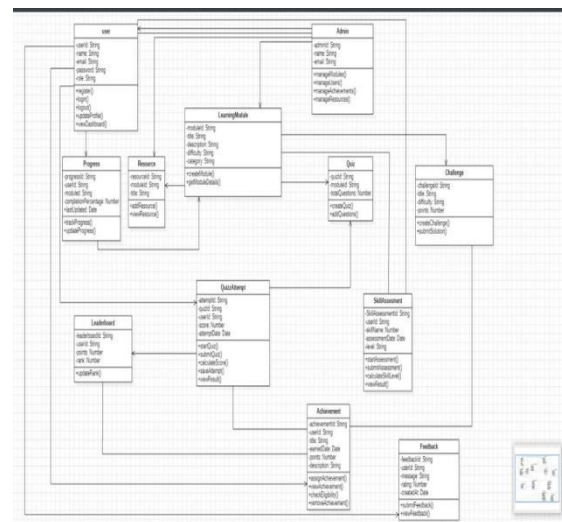


**UML DIAGRAM**

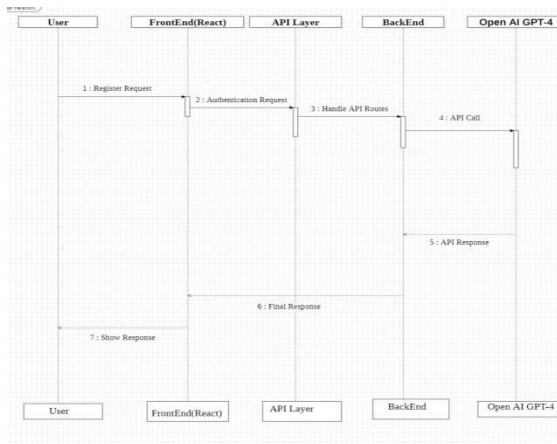
**USE CASE DIAGRAM**



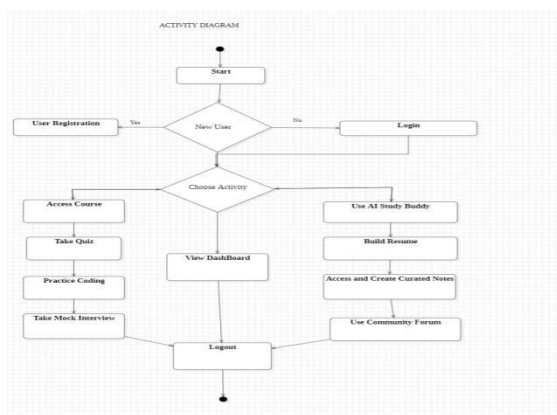
**CLASS DIAGRAM**



**SEQUENCE DIAGRAM**



## COLLABORATION DIAGRAM



## SYSTEM REQUIREMENTS

### 1. Hardware Requirements

- **Processor:** Minimum Intel i5 or equivalent (Recommended: Intel i7 / AMD Ryzen 7 for faster model training)
- **RAM:** Minimum 8 GB (Recommended: 16 GB or higher for handling large datasets)
- **Storage:** At least 256 GB SSD (Recommended: 512 GB or higher for faster data access)
- **GPU (Optional):** NVIDIA GPU (for deep learning models and faster computation)

- **Network:** Stable internet connection for real-time transaction data processing

### 2. Software Requirements

- **Operating System:** Windows, Linux, or macOS
- **Programming Language:** Python (preferred for machine learning development)
- **Libraries & Frameworks:**
  - NumPy, Pandas (data processing)
  - Scikit-learn (machine learning algorithms)
  - TensorFlow / PyTorch (deep learning models)
  - Matplotlib / Seaborn (data visualization)
  - SHAP (model explainability)
- **Database:** MySQL / PostgreSQL / MongoDB for storing transaction data
- **Development Tools:** Jupyter Notebook / VS Code / PyCharm

### MODULE DESCRIPTION

AspirePath AI consists of several integrated modules that work together to provide intelligent career guidance. The User Authentication Module manages secure registration and login processes, ensuring user data protection. The User Profile Management Module collects and updates user information such as education, skills, and interests, which serves as the foundation for personalized recommendations. The AI Recommendation Engine acts as the core component, analyzing user data using machine learning techniques to suggest

suitable career paths. The Skill Gap Analysis Module identifies missing skills required for desired roles and recommends relevant courses and certifications. The Career Path Planning Module provides a structured roadmap with clear steps to help users achieve their goals. The Chatbot Interaction Module offers real-time assistance by answering user queries and providing guidance. The Job Recommendation Module matches user profiles with relevant job opportunities to improve employability. The Progress Tracking Module monitors user development and provides feedback for continuous improvement. Finally, the Admin Module allows administrators to manage users, job listings, and system data, ensuring smooth system operation.

## CHALLENGES&RISKS

AspirePath AI, while offering intelligent career guidance, faces several challenges and risks during its development and deployment. One of the primary challenges is ensuring the accuracy and reliability of AI recommendations, as incorrect or biased data can lead to misleading career suggestions. Data privacy and security is another critical concern, since the system handles sensitive user information such as personal details, education, and career preferences. Maintaining up-to-date industry data is also challenging, as job market trends and required skills change rapidly, which may affect the relevance of recommendations.

Additionally, integrating complex machine learning models requires high computational resources and technical expertise, which can increase development costs and system complexity. User adoption can also be a challenge, as

individuals may hesitate to trust AI-based career guidance over traditional methods. There is also a risk of algorithmic bias, where the system may unintentionally favor certain career paths or user groups.

From a technical perspective, ensuring system scalability and performance under a large number of users is crucial. Any system failure or downtime can negatively impact user experience. Furthermore, dependency on external data sources such as job portals and course providers may introduce reliability issues.

Overall, addressing these challenges and risks is essential to ensure that AspirePath AI delivers accurate, secure, and trustworthy career guidance to its users.

## PROPOSED SYSTEM

The proposed system, AspirePath AI, introduces an integrated, AI-driven platform that unifies learning, career development, project building, and progress tracking into a single seamless ecosystem. Unlike existing fragmented solutions, it offers personalized learning paths, AI-powered skill assessment, and real-time career mentorship through an intelligent chatbot. The system includes a smart resume builder with GPT-based content enhancement, a dynamic goal and roadmap tracker, job and internship aggregation, and automatic resource curation based on user interests. Designed with modularity and automation at its core, AspirePath AI ensures a guided, structured, and efficient learning experience that bridges the gap between academic education and industry expectations, ultimately helping users learn smartly, build professionally, and grow consistently.

## ADVANTAGES

The proposed AspirePath AI system offers several advantages by utilizing advanced Artificial Intelligence to enhance career guidance and decision-making. One of the key benefits is personalized career recommendations, where users receive suggestions tailored to their skills, interests, and goals, leading to more accurate and meaningful career choices. The system also improves decision-making by providing data-driven insights instead of relying on guesswork or limited traditional counseling.

Another major advantage is skill gap identification, which helps users understand the difference between their current abilities and industry requirements, along with recommendations for courses and certifications to bridge that gap. The platform provides a structured career roadmap, guiding users step-by-step toward achieving their professional goals.

AspirePath AI also offers real-time assistance through an intelligent chatbot, making career guidance easily accessible anytime. The job recommendation feature enhances employability by matching users with relevant opportunities based on their profile. Additionally, the progress tracking system allows users to monitor their growth and continuously improve their skills.

The system is scalable and efficient, capable of handling multiple users while maintaining performance. It also reduces dependency on manual career counseling, saving time and resources. Overall, AspirePath AI provides a smart, efficient, and user-friendly solution that bridges the

gap between education and employment while empowering users with informed AspirePath AI successfully achieves its goal of providing an intelligent platform for personalized education and career guidance using AI-driven technologies. It bridges the gap between traditional learning methods and modern, interactive systems by integrating features such as AI-based quizzes, skill assessments, project recommendations, and a Study Buddy chatbot. By leveraging multiple APIs like OpenRouter, Gemini, Groq, and YouTube Data API, the platform delivers relevant and dynamic content tailored to user needs.

The system demonstrates strong performance in terms of usability, responsiveness, and feature integration. Users can seamlessly interact with different modules, receive instant feedback, and track their progress through assessments and recommendations. Backend technologies such as Node.js, Express.js, and MongoDB Atlas ensure efficient data handling, while security mechanisms like JWT authentication, bcrypt hashing, and environment variable management protect user data.

Overall, AspirePath AI provides a scalable and user-friendly solution for enhancing learning and career development. With future improvements such as deployment, advanced analytics, and enhanced personalization, the platform has the potential to evolve into a comprehensive AI-powered learning ecosystem that supports students and professionals in achieving their goals.

## FUTURE ENHANCEMENT

The future scope of AspirePath AI offers significant opportunities to enhance its capabilities and impact in the field of education and career guidance. One major improvement is the integration of **video-based mock interviews**, where users can participate in real-time interview simulations using camera and microphone access. This will allow evaluation of not only answers but also communication skills, confidence, and body language, making the platform more practical and closer to real-world interview scenarios.

Another important enhancement is improving the **accuracy and reliability of AI responses**. This can be achieved by implementing advanced fallback mechanisms, where the system switches between multiple AI providers or uses predefined structured responses when APIs fail or return inconsistent outputs. This ensures uninterrupted service and more consistent results across features like quizzes, recommendations, and chatbot interactions.

From a technical perspective, future enhancements may include deploying the system on cloud platforms, enabling real-time scalability, and integrating advanced analytics to track user progress in detail. Features such as resume analysis, job recommendations, and personalized career roadmaps can further strengthen the platform's value. Overall, these improvements will transform AspirePathAI into a comprehensive AI-powered ecosystem for learning, skill development, and career growth.

## REFERENCE

[1] S. Kapoor and S. Bindal, "Education and Career Guidance Platform –

A Case Study in Bangalore," IJREM, 2023.

[https://www.researchgate.net/publication/371157411\\_Education\\_and\\_Career\\_Guidance\\_Platform-](https://www.researchgate.net/publication/371157411_Education_and_Career_Guidance_Platform-)

[A\\_Case\\_Study\\_in\\_Bangalore](#)

[2] Roy et al., "Personalized Learning Paths Recommendation System using

Collaborative Filtering and Content-Based Approaches," 2024.

[https://www.researchgate.net/publication/382922670\\_Personalized\\_learning\\_paths\\_recommendation\\_s](https://www.researchgate.net/publication/382922670_Personalized_learning_paths_recommendation_s)

[system\\_with\\_collaborative\\_filtering\\_and\\_content-based\\_approaches](#)

[3] N. Kumari et al., "AI-Based Career Counselling System," 2025.

[https://www.researchgate.net/publication/393028031\\_AI\\_Based\\_Career\\_Counselling\\_System](https://www.researchgate.net/publication/393028031_AI_Based_Career_Counselling_System)

[4] Amaan Khan et al., "CareerX: AI-Powered Career Path Recommender

System for College Students," 2025.

[https://www.researchgate.net/publication/390953768\\_CareerX\\_AI-](https://www.researchgate.net/publication/390953768_CareerX_AI-)

[Powered\\_Career\\_Path\\_Recommender\\_System\\_for\\_College\\_Students](#)

[5]"Web-Based AI Mock Interview System Using ChatGPT with Real-Time

Voice Interaction,” ResearchGate, 2024.  
[https://www.researchgate.net/publication/397199541\\_Web-Based\\_AI\\_Mock\\_Interview\\_System\\_Using\\_ChatGPT\\_with\\_Real-Time\\_Voice\\_Interaction](https://www.researchgate.net/publication/397199541_Web-Based_AI_Mock_Interview_System_Using_ChatGPT_with_Real-Time_Voice_Interaction)

[6] Shrishail Kadadi, Shreyas Kamate, Mallikarjun Sarawadi, Prayag Ulgekar, “*Online Compiler as a Cloud Service*,” International Journal of Research Publication and Reviews (IJRPR), vol. 6, Issue 12, ISSN: 2582-7421, 2024. [Online]. Available: <https://ijrpr.com/uploads/V6ISSUE12/IJRP57601.pdf>

[7]NewsAPI, “*News API – Live News Data and Headlines*,” [Online]. Available: <https://newsapi.org/>

[8]OpenRouter, “*OpenRouter API – Unified Interface for AI Models*,” [Online]. Available: <https://openrouter.ai/>

[9]JDoodle, “*JDoodle API – Online Compiler and Code Execution Service*,” [Online]. Available: <https://www.jdoodle.com/>

[10] roadmap.sh, “*Roadmap.sh – Developer Learning Roadmaps*,” [Online]. Available: <https://roadmap.sh/>